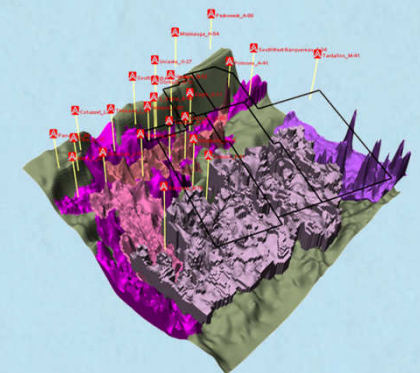
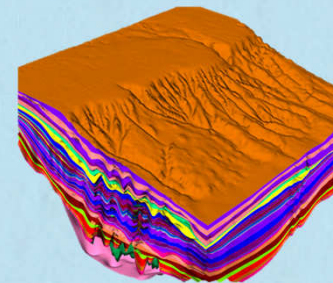
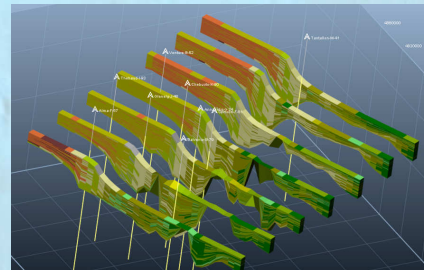
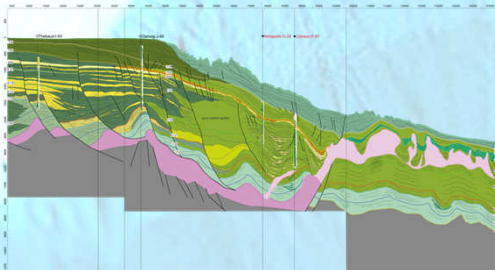
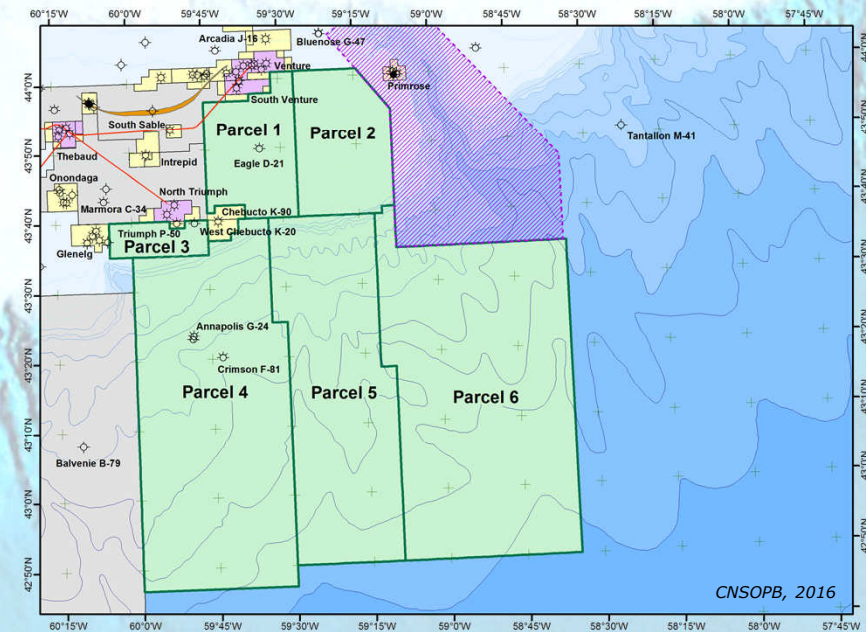


Central Scotian Slope Study

2016 Call for bid area



An aerial topographic map of a mountainous region. The terrain is color-coded by elevation, with green and yellow representing lower elevations and blue and purple representing higher elevations. A prominent river valley runs through the center of the image, with a bridge crossing the river. The surrounding areas are characterized by steep, rugged slopes and numerous smaller tributaries.

ACKNOWLEDGEMENTS

ACKNOWLEDGEMENTS:

This project relies on contributions from many individuals from a variety of disciplines and organizations that are listed below.



Leptis E & P Ltd.



Organisation	Contributors
Nova Scotia Department of Energy	Sandy MacMullin, Kim Doane, Adam MacDonald
OERA	Stephen Dempsey, Russell Dmytriw
CNSOPB	Carl Makrides, Brent Smith, David Brown, Mark Deptuck, Kris Kendall
Leptis E&P Ltd.	Matt Luheshi
BeicipFranlab	Laurent Cuilhe, Francky Saint-Ange, Emerson Marfisi, Dimitri Savva, Eleonore Stozicky, Alexandra Gueguen, Lucie Pregens, Arnaud Arbeaumont, Nathalie Lucet, Nicolas Desgoutte, Pierre-Yves Filleaudeau, Nicolas Hawie, Jamily Brahami, Donald Roccabruna, Jonathan Pitz, Scholly Baptiste, Benjamin Quilbe, Pierre-Yves Chenet
APT	Martin Fowler
GSC-NRCAN	David Piper
Saint Mary's University	Georgia Pe-Piper, Andrew MacRae
Dalhousie University	Grant Wach, Ricardo Silva

An aerial topographic map of a mountainous region. The terrain is color-coded by elevation, with green and yellow representing lower elevations and brown and tan representing higher elevations. A prominent river valley runs through the center of the image, with a bridge crossing the river. The surrounding areas are characterized by steep slopes and ridges. The text "TABLE OF CONTENTS" is centered on the map.

TABLE OF CONTENTS

Table of Contents

		Acknowledgements
		Table of Contents
Chapter 1		Introduction to Sable Sub-basin play assessment
	1.1	Introduction
	1.2	Executive Summary
Chapter 2		Regional Tectonic Context
	2.1.1	Regional Tectonic Context
	2.1.22	Bibliographic References
Chapter 3		Stratigraphy
		Introduction
3 1		Stratigraphic Framework
	3.1.1	Overview
	3.1.4	Stratigraphic Framework
	3.1.15	Bibliographic References
3 2		Geological Cross Sections
	3.2.1	Geological Cross Sections: Shelf Transect
	3.2.3	Geological Cross Sections: Slope Transect
	3.2.5	Geological Cross Sections: Dip Transect (Wheeler Diagram)
Chapter 4		Seismic interpretation
4 1		Seismic Database
4 2		Well to Seismic Calibration and Velocity Model
	4.2.1	Section Calibration
	4.2.2	Velocity Model and Time to Depth Conversion
4 3		Structural Mapping
	4.3.1	Review and update of the Seismic Horizons
	4.3.2	Structural Mapping
	4.3.2.1	Seabed depth structural map
	4.3.2.3	T29 (Mid-Oligocene Unconformity) Depth Structural Map
	4.3.2.5	T50 (Base Ypresian Chalk) Depth Structural Map
	4.3.2.7	K94 (Turonian Cenomanian Unconformity) Depth Structural Map
	4.3.2.9	K101 (Late Albian Unconformity) Depth Structural Map
	4.3.2.11	K130 (Hauterivian MFS) Depth Structural Map
	4.3.2.13	K137 (Berriasian / Valanginian Unconformity) Depth Structural Map
	4.3.2.15	J150 (Tithonian MFS) Depth Structural Map
	4.3.2.17	J163 (Callovian MFS) Depth Structural Map
	4.3.2.19	Top Alloctonous Salt
	4.3.2.21	Top Salt Canopy
	4.3.2.23	Top Autoctonous Salt
	4.3.2.25	J200 (Break-up Unconformity – Base Postrift)
	4.3.2.29	Bibliographic References

Chapter 5		Seismic Reservoir Characterisation
	5 2	Acoustic Inversion
	5 4	Seismic Facies Analysis
	5 8	Attribute Maps
Chapter 6		Seismic Stratigraphy and Gross Depositional Environment Mapping
	6 1	Seismic Stratigraphy
	6.1.1	Architectural cross-section: Dip Transect 1
	6.1.2	Architectural cross-section: Dip Transect 2
	6.1.3	Architectural cross-section: Dip Transect 3
	6 2	Stratigraphic Modelling
	6.2.1	DionisosFlow workflow
	6.2.3	DionisosFlow modelling results
	6.2.5	Conclusions
	6.2.6	Bibliographic References
	6 3	GDE Mapping
	6.3.1	Methodology
	6.3.4	J200 GDE map
	6.3.5	Scatarie Mbr GDE map
	6.3.6	J163 GDE map
	6.3.7	Abenaki/MicMac Fm GDE map
	6.3.8	J150 GDE map
	6.3.9	Lower Missisauga Fm GDE map
	6.3.10	K137 GDE map
	6.3.11	Middle Missisauga Fm GDE map
	6.3.12	K130 GDE map
	6.3.13	Logan Canyon GDE map
	6.3.14	K101 GDE map
	6.6.15	K94 GDE map
Chapter 7		Basin Modeling
	7 1	3D Block building
	7 2	Maturation/Expulsion Simulation
	7.2.3	Tithonian Source Rock
	7.2.7	Toarcian Source Rock
	7.2.11	Pliensbachian Source Rock
	7.2.15	Sinemurian Source Rock
	7 3	Migration Simulation
	7.3.1	Play Definition
	7.3.2	HC Saturation and Solution
	7.3.18	Petroleum System Chart
	7.3.19	Play Volumetric
	7.3.24	Play and Parcel Ranking

Chapter 8		Leads Assessment and Ranking
	8 1	Introduction and Method
	8 2	Leads Assessment: Geophysical Methods
	8 3	Leads Assessment: Comparison with TemisFlow Results
		Appendixes